

Insurers' Market Repository

Browser Configuration And Getting Started Guide

Table of Contents

| | |
|--|-----------|
| Overview | 4 |
| IMR Features that Require Configuration of Web Browser..... | 5 |
| View Documents and Progress Bar | 5 |
| Simultaneous Download of Multiple Documents | 5 |
| Direct Load | 6 |
| Add Document..... | 6 |
| <i>Role of Applets</i> | <i>7</i> |
| Impact of Not Using Applets | 8 |
| View Documents | 8 |
| Simultaneous Download of Multiple Documents | 8 |
| Direct Load | 9 |
| Add Document..... | 9 |
| Web Client and Browser Requirements | 11 |
| <i>Operating System</i> | <i>11</i> |
| <i>Web Browsers</i> | <i>11</i> |
| <i>Java Runtime Environment</i> | <i>11</i> |
| Microsoft JVM..... | 11 |
| Sun JVM..... | 11 |
| Validating the Web Client and Browser Configuration Requirements..... | 13 |
| <i>View the Current Browser Configuration</i> | <i>13</i> |
| Checking settings in Internet Explorer 6 | 16 |
| <i>Security Settings.....</i> | <i>16</i> |
| <i>Configuration for Running Applets.....</i> | <i>17</i> |
| Case 1 – If using the Sun JRE..... | 17 |
| Case 2 – If using the Microsoft JVM..... | 18 |
| Case 3 – If Sun JRE as well as Microsoft JVM is not used | 19 |
| <i>Resetting Preferences for Applets</i> | <i>19</i> |
| Getting Started Guide | 22 |
| <i>When Using Sun JVM versions 1.4.2_13 and 1.5.0_11.....</i> | <i>22</i> |
| <i>When using Microsoft JVM.....</i> | <i>25</i> |
| <i>When No JVM installed or Applets are not available</i> | <i>29</i> |
| Frequently Asked Questions | 32 |
| <i>Does IMR work with Sun JRE 1.3 / JVM 1.3?.....</i> | <i>32</i> |
| <i>Does IMR work with Sun JRE 1.5 or Java 5?</i> | <i>32</i> |

| | |
|---|-----------|
| <i>Does IMR work with Internet Explorer 7?</i> | 32 |
| <i>How do I check which JVM version do I have OR if I have applets enabled or not?</i> | 33 |
| <i>What is an applet?</i> | 33 |
| <i>What should I do when JRE 1.5 is installed in my machine but I want to use JRE 1.4.2_13?</i> | 33 |
| <i>From where can I download the Sun JRE version supported by IMR?</i> | 33 |
| Support | 34 |
| Annexure 1: Glossary of Terms | 35 |
| <i>Applet</i> | 35 |
| <i>JRE</i> | 35 |
| <i>JVM</i> | 35 |
| <i>Cookie</i> | 35 |
| Annexure 2 | 36 |
| <i>Sun JRE version 1.5.0_11 is used and IMR is accessed using proxy server</i> | 36 |

Overview

The Insurer's Market Repository (hereafter referred to as IMR) is a web-based application offering users secure access to the IMR content via the internet. This document provides the information required to configure the web browser to enable them to use IMR. It also includes detailed instructions to validate the browser settings.

The Getting Started section is intended to help first time users acquaint themselves with the expected actions depending on their browser configurations.

A section on 'Frequently Asked Questions' points to information present elsewhere in the document, but in a question-answer format.

IMR Features that Require Configuration of Web Browser

IMR is a web based application, which implies that it runs inside a web browser on the user's computer. A variety of web browsers are available which support different standards. Incompatibilities even exist across different versions of the same browser. To allow for a comfortable and consistent user experience IMR recommends standard settings of the most commonly used browsers like Internet Explorer.

Some of the features which can vary based on the user's browser settings are described below.

View Documents and Progress Bar

If the browser is configured to the recommended settings, clicking on a document hyperlink (or using the View Link) opens the document in a new window using the application that the user has configured to open the file type i.e. Microsoft Word. A progress bar is also displayed indicating the progress of the download.

Simultaneous Download of Multiple Documents

If the browser is configured to the recommended settings, users can select multiple documents (by selecting on the adjacent checkboxes) and use the Download link (see figure 1).

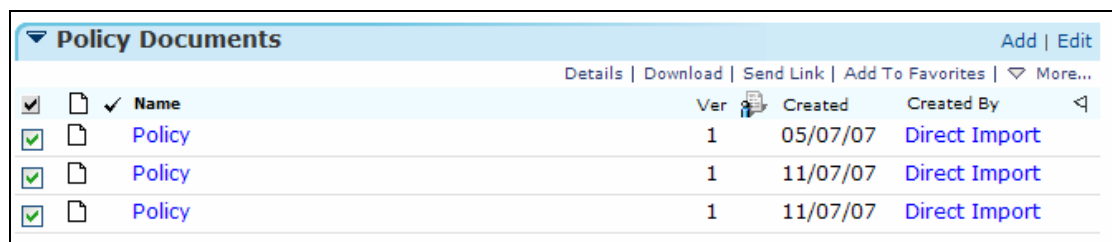


Figure 1 – IMR Screenshot of Multiple Documents Selected for Download

The users can select more than one document for download and then click on the Download link. Once the Download link is clicked, the user is taken to another screen to specify the folder where the documents should be downloaded (see figure 2).

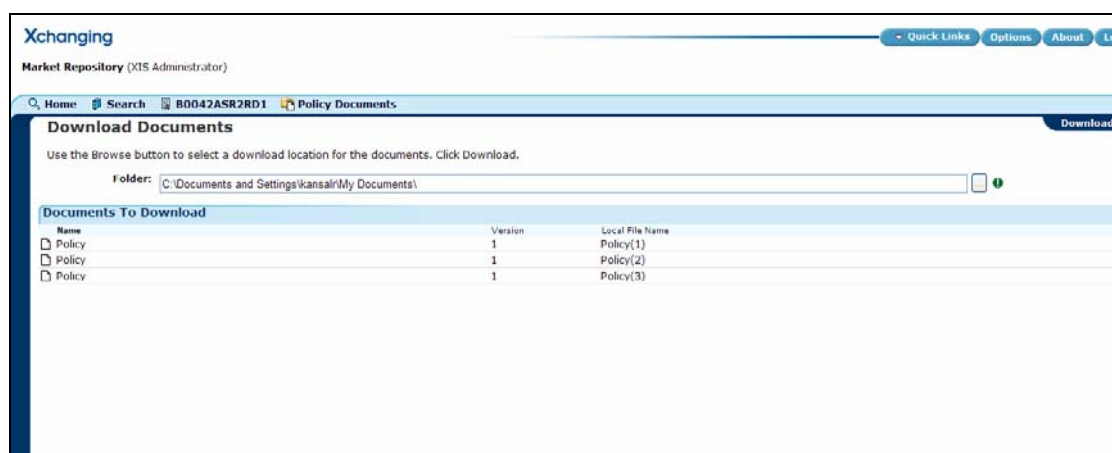
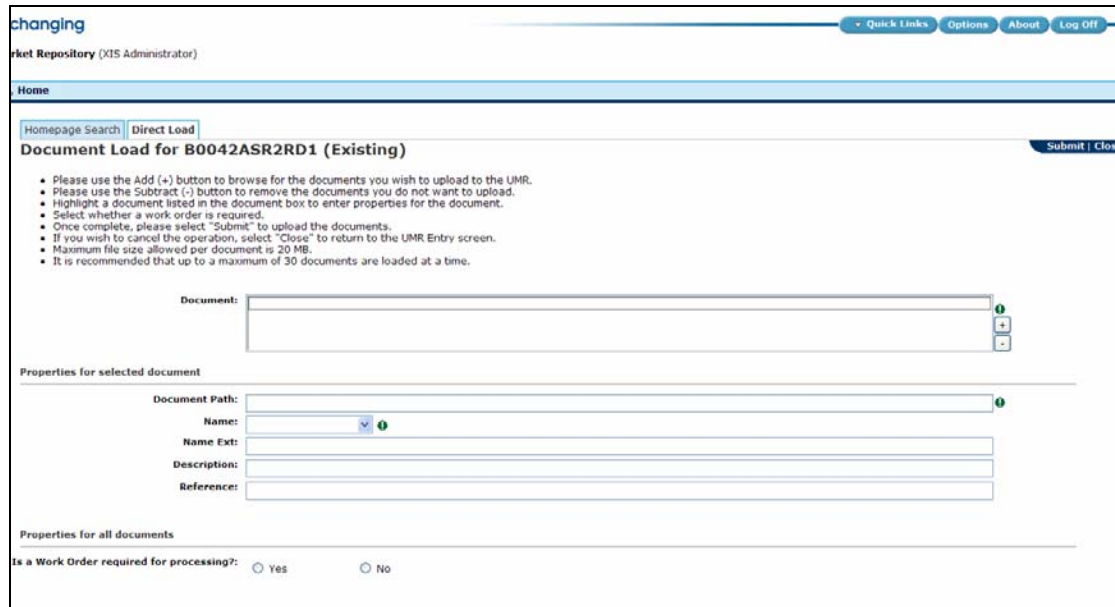


Figure 2 – IMR Screenshot of Downloading Multiple Documents

Direct Load

Direct Load is accessed via the Direct Load tab and then after entering the UMR on the UMR Entry screen, the user is able to upload documents via the Direct Load Document Load screen (see figure 3).



changing
Market Repository (XIS Administrator)

Home

Homepage Search Direct Load

Document Load for B0042ASR2RD1 (Existing) Submit | Close

- Please use the Add (+) button to browse for the documents you wish to upload to the UMR.
- Please use the Subtract (-) button to remove the documents you do not want to upload.
- Highlight a document listed in the document box to enter properties for the document.
- Select whether a work order is required.
- Once complete, please select "Submit" to upload the documents.
- If you wish to cancel the operation, select "Close" to return to the UMR Entry screen.
- Maximum file size allowed per document is 20 MB.
- It is recommended that up to a maximum of 30 documents are loaded at a time.

Document: + -

Properties for selected document

Document Path:

Name:

Name Ext:

Description:

Reference:

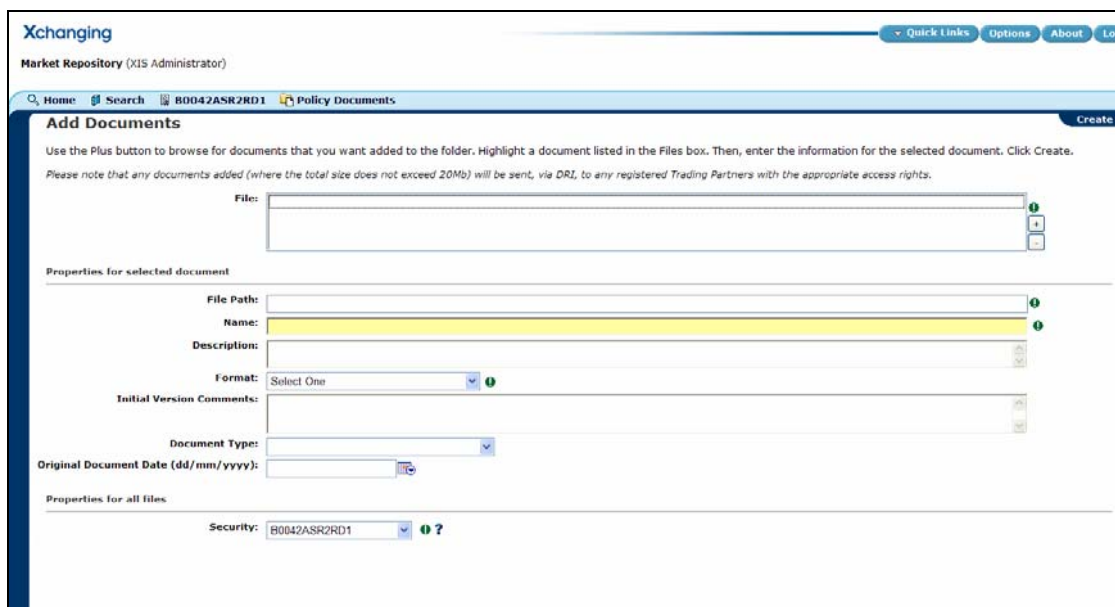
Properties for all documents

Is a Work Order required for processing?: Yes No

Figure 3 – IMR Screenshot of Direct Load Document Load

Add Document

Documents can be added using the Add link for the folders on the UMR and UCR view. The Add Documents screen is displayed and it is possible to add multiple documents (see figure 4).



Xchanging
Market Repository (XIS Administrator)

Home Search B0042ASR2RD1 Policy Documents Create

Add Documents

Use the Plus button to browse for documents that you want added to the folder. Highlight a document listed in the Files box. Then, enter the information for the selected document. Click Create.

Please note that any documents added (where the total size does not exceed 20Mb) will be sent, via DRI, to any registered Trading Partners with the appropriate access rights.

File: + -

Properties for selected document

File Path:

Name:

Description:

Format: Select One

Initial Version Comments:

Document Type:

Original Document Date (dd/mm/yyyy):

Properties for all files

Security: B0042ASR2RD1

Figure 4- IMR Screenshot of Add Documents for Multiple Documents

Role of Applets

The features described above are made possible through the use of applets. Applets require that the web browser is configured with an appropriate Java Runtime Environment. All modern browsers support easy installation of the Java Runtime Environment and the use of applets. However, if the users decide not to use applets in the web browser, IMR can still be used albeit with some limitations. The impact of not using applets in the web browser is described in the next section.

Impact of Not Using Applets

If the browser is not using the recommended settings and applets are disabled, the features specified in the previous section will not function as described above.

View Documents

If applets are not available in the web browser and the user clicks on the file hyperlink or clicks on the 'View' link, the user is prompted to save the file rather than the file being displayed (see figure 5). Once saved, the user can then view the file by opening it on their file system.

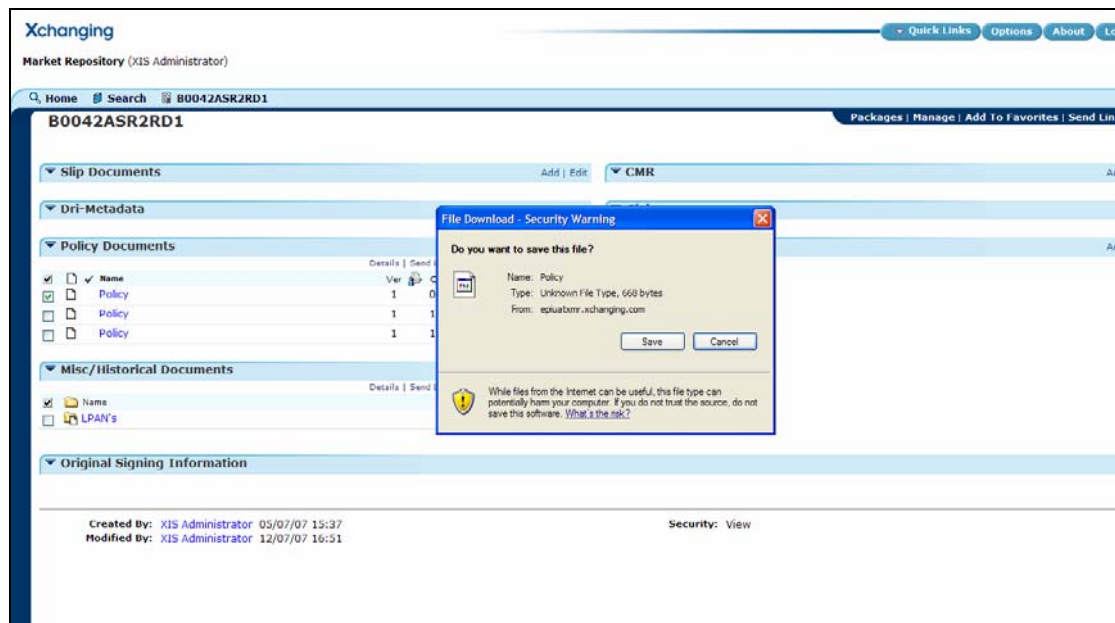


Figure 5- IMR Screenshot of File Saving Prompt

Simultaneous Download of Multiple Documents

If applets are not available in the web browser, the users will not be able to download multiple files simultaneously.

The users can still save one file at a time by clicking on the document hyperlink and using the View option available in the File menu of the browser.

As can be seen in the screen capture below (figure 6), the Download link is not shown to the user.



Figure 6 – IMR Screenshot of Missing Download Link

Direct Load

Direct Load does NOT work without applets. After entering a UMR on the UMR Entry screen, the user will see a blank screen after selecting the Submit button (see figure 7).

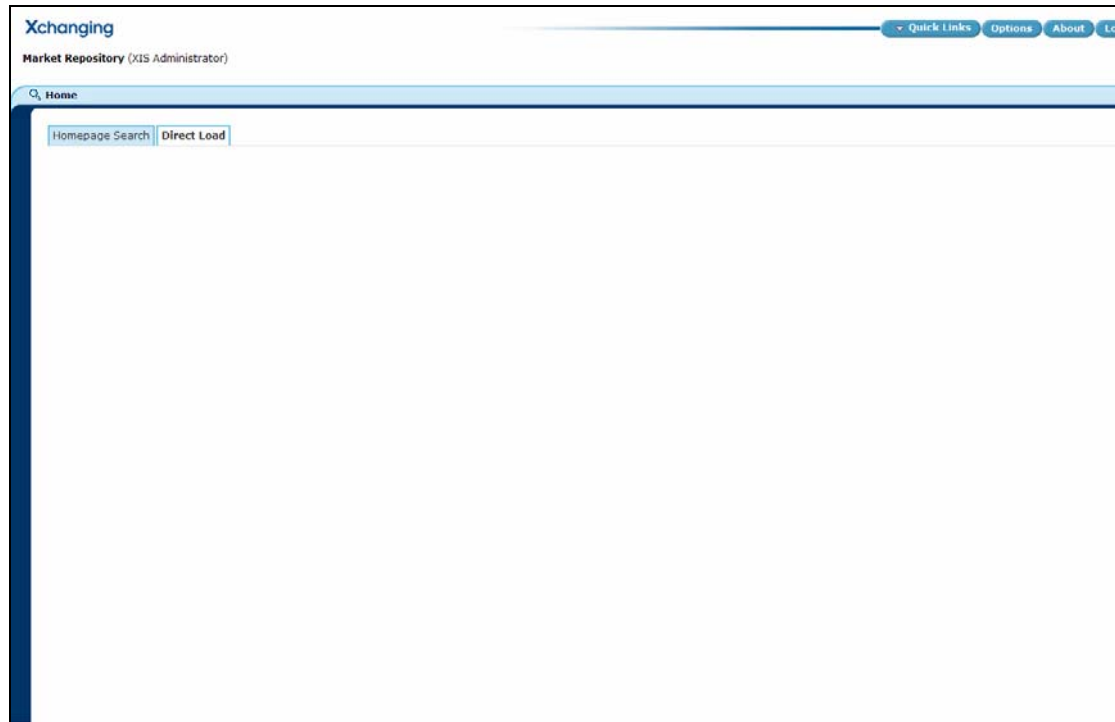


Figure 7- IMR Screenshot of Direct Load Without Applets

Add Document

Only one document can be added at a time using the Add Document functionality from any of the folders on the UMR or UCR screens. As can be seen in the screen capture below (figure 8), only one document can be added at a time. This is different from the Add Document shown in the previous section where more than one document can be added at a time (see figure 4).

Xchanging
Market Repository (XIS Administrator)

Quick Links Options About Log Out

Home Search B0042ASR2RD10 Misc/Historical Documents

Add Document

Use the browse button to select document that you want added to the folder. Click Create.

Please note that any documents added (where the total size does not exceed 20Mb) will be sent, via DRL, to any registered Trading Partners with the appropriate access rights.

File:

Name:

Description:

Format:

Initial Version Comments:

Document Type:

Original Document Date:

Security:

Figure 8 – IMR Screenshot of Add Document for Single Document

Web Client and Browser Requirements

In order to use the IMR the following software is required on the user's computer

Operating System

Microsoft Windows® 98, Windows 98 Second Edition, Windows Millennium Edition (Windows Me), Windows NT® 4.0 with the high encryption version of Service Pack 6a (SP6a) and higher, Windows 2000, or Windows XP.

Web Browsers

Microsoft Internet Explorer 6.0 Service Pack 2

OR

Mozilla Firefox 1.0 for Microsoft Windows®

Java Runtime Environment

Microsoft JVM

Microsoft JVM 5.0.3810 for the following configurations:

- Internet Connection with no Proxy Server
- Internet Connection with Proxy Server, but no Socket Permission/
- Internet Connection with Proxy Server and Socket Permission.

Sun JVM

The Java Runtime Environment is required for applets in the web browser. The details are available in the [role of applets](#) section.

The table below shows the java versions, and configurations, that work for the IMR (Note: Java 1.6.x is not included).

| Sun Java Runtime Environment (JRE) | Internet Connection with no Proxy Server | Internet Connection with Proxy Server, but no Socket Permission | Internet Connection with Proxy Server and Socket Permission |
|------------------------------------|--|---|---|
| 1.4.2_06 | ✓ | ✗ | ✗ |
| 1.4.2_07 | ✓ | ✗ | ✗ |
| 1.4.2_08 | ✓ | ✗ | ✗ |
| 1.4.2_09 | ✓ | ✗ | ✗ |
| 1.4.2_10 | ✓ | ✗ | ✗ |
| 1.4.2_11 | ✓ | ✗ | ✗ |
| 1.4.2_12 | ✓ | ✗ | ✗ |
| 1.4.2_13 | ✓ | ✓ | ✓ |
| 1.5.0 | ✓ | ✗ | ✗ |
| 1.5.0_01 | ✓ | ✗ | ✗ |
| 1.5.0_02 | ✓ | ✗ | ✗ |
| 1.5.0_03 | ✓ | ✗ | ✗ |
| 1.5.0_04 | ✓ | ✗ | ✗ |
| 1.5.0_05 | ✓ | ✗ | ✗ |
| 1.5.0_06 | ✓ | ✗ | ✗ |

| | | | |
|----------|---|---|---|
| 1.5.0_07 | ✓ | ✗ | ✗ |
| 1.5.0_08 | ✓ | ✗ | ✓ |
| 1.5.0_09 | ✓ | ✗ | ✓ |
| 1.5.0_10 | ✓ | ✗ | ✓ |
| 1.5.0_11 | ✓ | ✗ | ✓ |

A bug that causes timeout errors when downloading documents when using a proxy server was fixed in Sun Java JRE versions 1.4.2_13 and 1.5.0_8 onwards.

If the applet functions do not work with the later versions of Java (1.5.0 and higher), this will require a change to client's java policy file to add a socket permission (see below) to allow the applet to run correctly via the proxy server within your network configuration.

Java 1.6.x does not appear in the table because it is not supported. If you are experiencing problems using this version, then we suggest you downgrade to a version listed in the table. When downgrading, it is vital that you first uninstall both Java 1.6.x AND the lower version you wish your Internet Explorer to use (if already installed) and then, re-install the lower version. This is because Internet Explorer uses the copy of java.exe silently made by the install into your C:\WINDOWS\System32 folder, on which you have no control over, even if you explicitly say not to install the public JRE.

Note: When using a Sun JVM then the window from where you select which documents to load from your file system will default to "My Documents" rather than your "Last Visited" location.

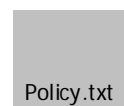
Adding the Socket Permission for the Proxy Server

The socket permission for the proxy server is added to the java system policy file, which is located in "{java.home}/lib/security/java.policy". The following lines need to be added to this file within the brackets "{" and "}". After this change the computer will need to be restarted to take effect.

```
// Grant allowing signed applets to connect via the proxy server over https

Permission java.net.SocketPermission "PROXY-SERVER-HOST:PROXY-SERVER-PORT",
"connect, accept, resolve";
```

An example java.policy file with this line added is attached for a proxy server of 10.1.10.1 and port number of 80.



Conclusions

- If you do use a proxy server, and are using Java 1.4.x, the only version that will work is 1.4.2_13.
- If you are specifying a proxy server, and using Java 1.5.x, you need to use version 1.5.0_08 or higher, and you may need to add a socket permission.

Validating the Web Client and Browser Configuration Requirements

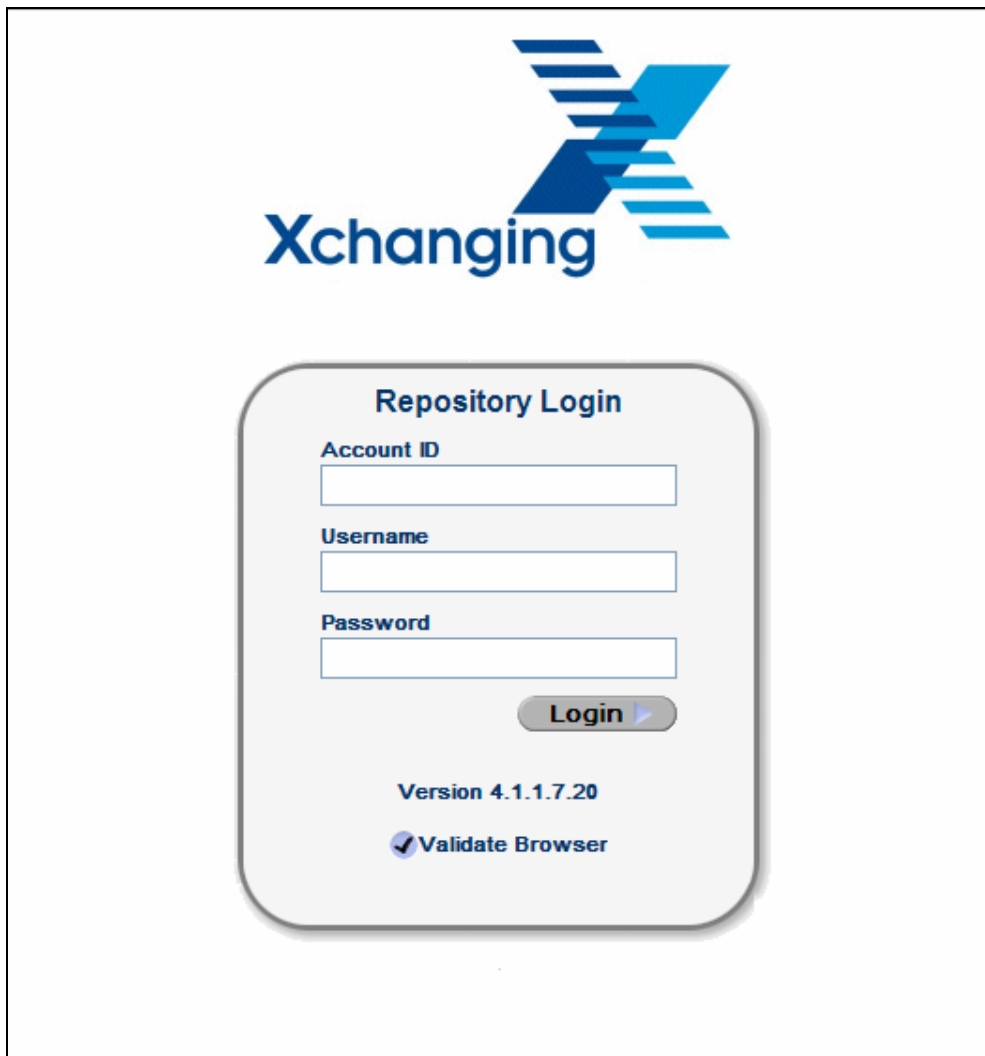
IMR provides a simple way by which users can validate if their browser is setup with the recommended configuration.

View the Current Browser Configuration

In order to check the browser configuration, users need to navigate to the following URL:

<https://repository.xchanging.com/worksitemp/index.jsp>

Select “Validate Browser” option (see figure 9).



The screenshot shows the Xchanging logo at the top. Below it is a rounded rectangular box titled "Repository Login". Inside this box, there are three input fields labeled "Account ID", "Username", and "Password". Below these fields is a "Login" button with a right-pointing arrow. At the bottom of the box, the text "Version 4.1.1.7.20" is displayed, followed by a checked checkbox and the text "Validate Browser".

Figure 9 – IMR Screenshot of Validate Browser Option

If the browser is set up correctly, the user should see all tick marks. The following two screen captures show the browser configuration for Internet Explorer 6 (Service Pack 2) running on Windows XP Professional Operating System, having Sun JRE 1.4.2_13 and MS JVM respectively (see figures 10 and 11).

| Your Browser Settings... | | |
|---|--|---|
| Browser | Microsoft Internet Explorer | ✓ |
| Browser Version | 6.0 | ✓ |
| Browser Platform | Windows NT 5.1; SV1; .NET CLR 1.1.4322; InfoPath.1; .NET CLR 2.0.50727 | ✓ |
| Javascript Version | 1.3 | ✓ |
| Cookies Enabled | Yes | ✓ |
| Java Enabled | Yes | ✓ |
| Java Virtual Machine | Sun Microsystems Inc.1.4.2_13 | ✓ |
| Conclusion ... | | |
| <p>Your browser is properly configured to run WorkSite MP. If you still encounter problems, please check the following items or contact your System Administrator.</p> <ul style="list-style-type: none"> • Browser security level is not set to High. | | |
| Recommended JVM Version | | |
| Microsoft JVM (4.79 or Higher) or Sun PlugIn (1.4.2_06) | | |

Figure 10 – Browser Settings for Sun JVM 1.4.2_13

| Your Browser Settings... | | |
|---|--|---|
| Browser | Microsoft Internet Explorer | ✓ |
| Browser Version | 6.0 | ✓ |
| Browser Platform | Windows NT 5.1; SV1; .NET CLR 1.1.4322; InfoPath.1; .NET CLR 2.0.50727 | ✓ |
| Javascript Version | 1.3 | ✓ |
| Cookies Enabled | Yes | ✓ |
| Java Enabled | Yes | ✓ |
| Java Virtual Machine | Microsoft Corp.1.1.4(5.0.3810) | ✓ |
| Conclusion ... | | |
| <p>Your browser is properly configured to run WorkSite MP. If you still encounter problems, please check the following items or contact your System Administrator.</p> <ul style="list-style-type: none"> • Browser security level is not set to High. | | |
| Recommended JVM Version | | |
| Microsoft JVM (4.79 or Higher) or Sun PlugIn (1.4.2_06) | | |

Figure 11 - Browser Settings for Microsoft JVM 5.0.3810

| Your Browser Settings... | | |
|---|---|---|
| Browser | Microsoft Internet Explorer | ✓ |
| Browser Version | 6.0 | ✓ |
| Browser Platform | Windows NT 5.1; SV1; .NET CLR 1.1.4322; .NET CLR 2.0.50727; .NET CLR 3.0.04506.30 | ✓ |
| Javascript Version | 1.3 | ✓ |
| Cookies Enabled | Yes | ✓ |
| Java Enabled | Yes | ✓ |
| Java Virtual Machine | Can not find JVM Info | ⚠ |
| Expected JVM Version | <u>Microsoft JVM (4.79 or Higher) or Sun PlugIn (1.4.2_06)</u> | ⚠ |
| Conclusion ... | | |
| <p>Your browser is properly configured to run WorkSite MP.</p> <p>⚠ Your Java Virtual Machine is not configured properly. You will not be able to use applets. If you still encounter problems, please check the following items or contact your System Administrator.</p> <ul style="list-style-type: none"> • Browser security level is not set to High. | | |
| Recommended JVM Version | | |
| <u>Microsoft JVM (4.79 or Higher) or Sun PlugIn (1.4.2_06)</u> | | |

Figure 12 - Browser Settings when neither Sun nor Microsoft JVM Installed

Checking settings in Internet Explorer 6

Once the required software is present on the user's computer, it is recommended that the following settings are verified.

Security Settings

From the browser menu, choose *Tools -> Internet Option -> Security -> Custom Level* (see figure 13).

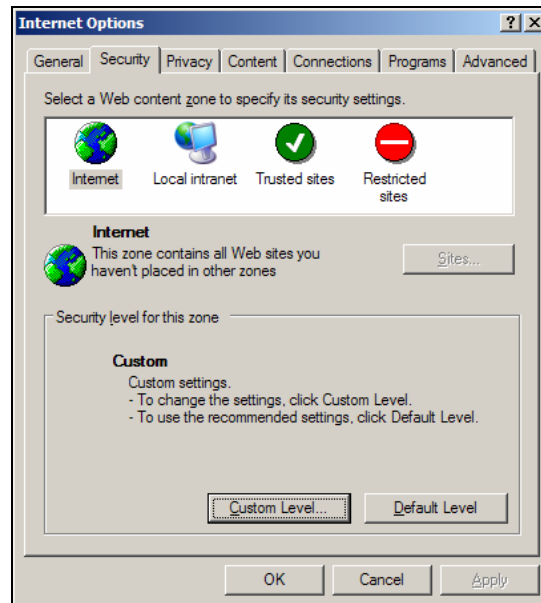


Figure 13 - Screenshot of Security tab

Check for the options of "Scripting for Java applets". It should be "enabled" as shown in the screen shot (see figure 14).

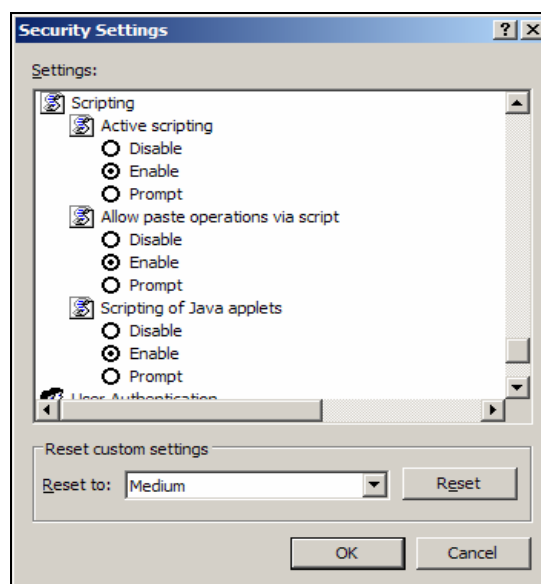


Figure 14 - Screenshot of Scripting options

Configuration for Running Applets

From the browser menu, choose *Tools -> Internet Option -> Advanced*

Case 1 – If using the Sun JRE

Please check the “Java (Sun)” option is selected (see figure 15).

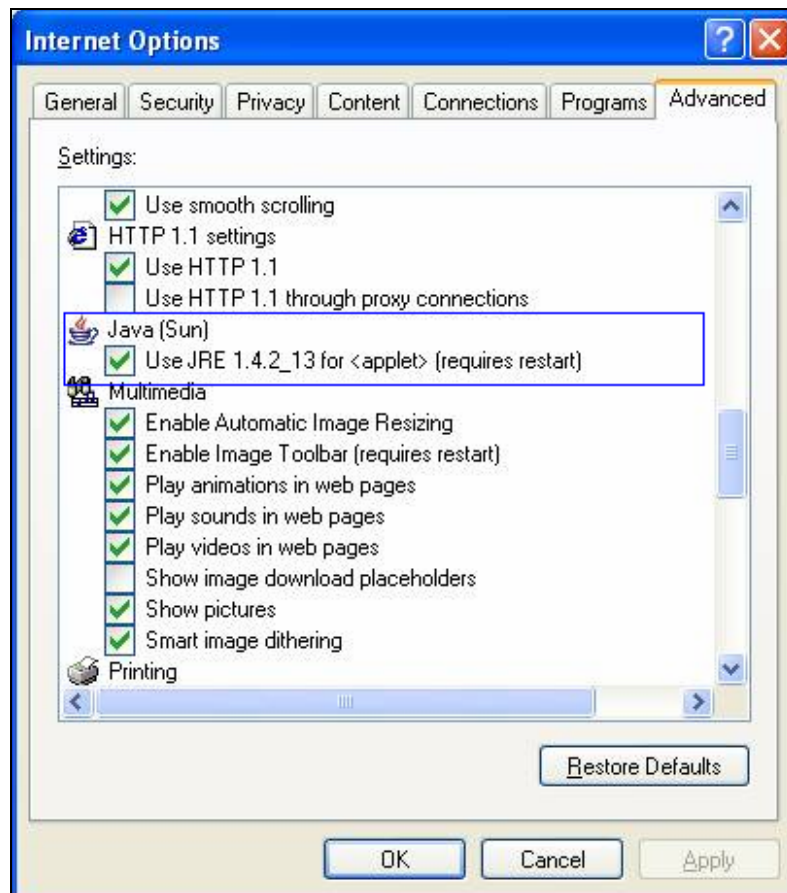


Figure 15 – Screenshot of Advanced Tab

Case 2 – If using the Microsoft JVM

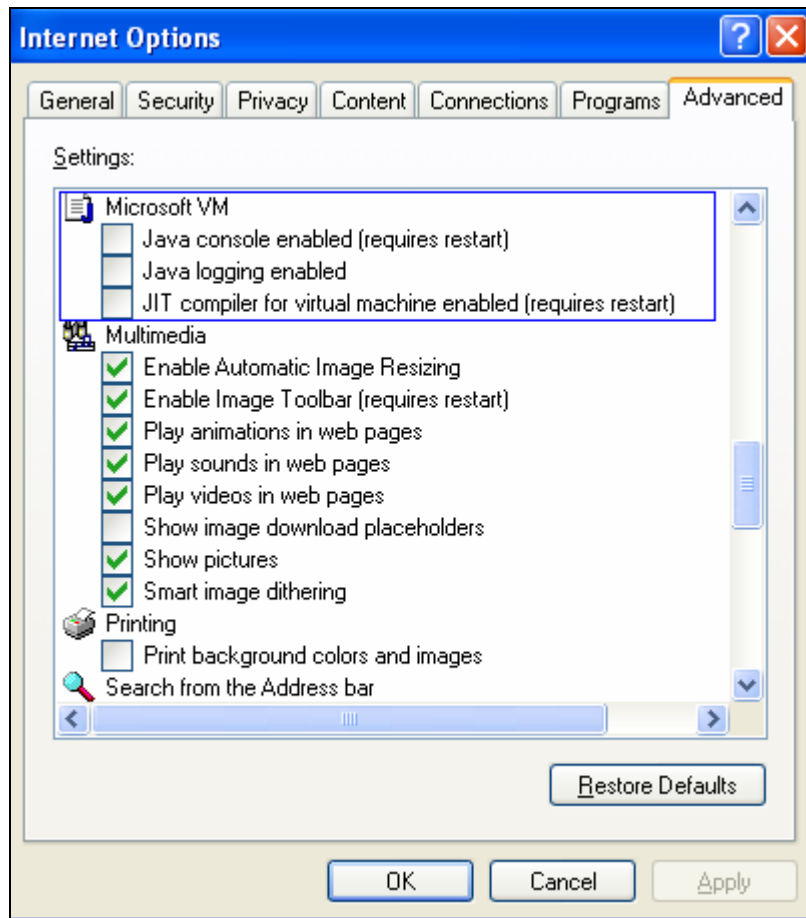


Figure 16 - Screenshot of Microsoft JVM Settings

Case 3 – If Sun JRE as well as Microsoft JVM is not used

Please note that if neither Sun JRE nor Microsoft JVM is installed, user will not be able to use the features described in section '[IMR Features which require configuration of Web Browser](#)'.

Resetting Preferences for Applets

IMR records the preferences of 'using applets' or 'not using applets' in cookies¹ on the user's machine. In some cases, it is possible that after the version of Java is updated in the browser from a non compatible version to a compatible version, the preferences recorded in the cookie are not updated. In such cases, users should delete the cookie present on their machine. Users must also delete the 'cookie' if they want to change their preferences from 'Not using Applets' to 'Using Applets'. Please follow the following steps to delete cookies for IMR in Internet Explorer 6.

1. In the Internet Explorer Window, please click on Tools – ‘Internet Options’.
2. Next, click on the ‘Settings’ Button (see figure 17).

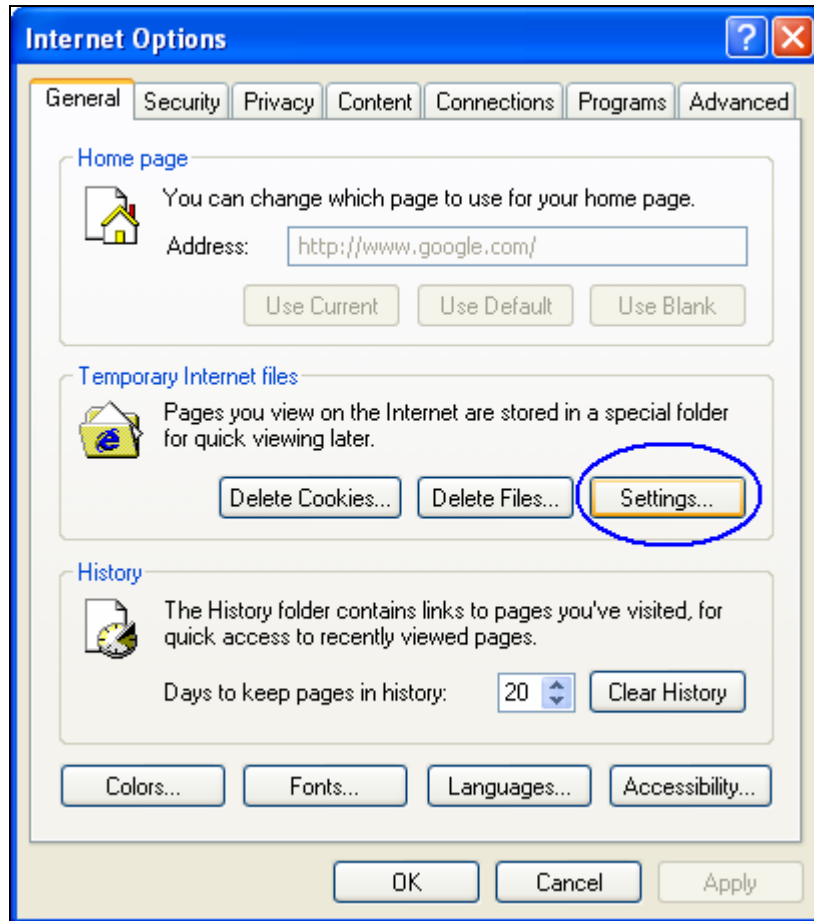


Figure 17 - Screenshot of Settings Button

3. Next, click on the 'View Files' Button (see figure 18). This should open a window showing all the Temporary Internet Files (see figure 19).

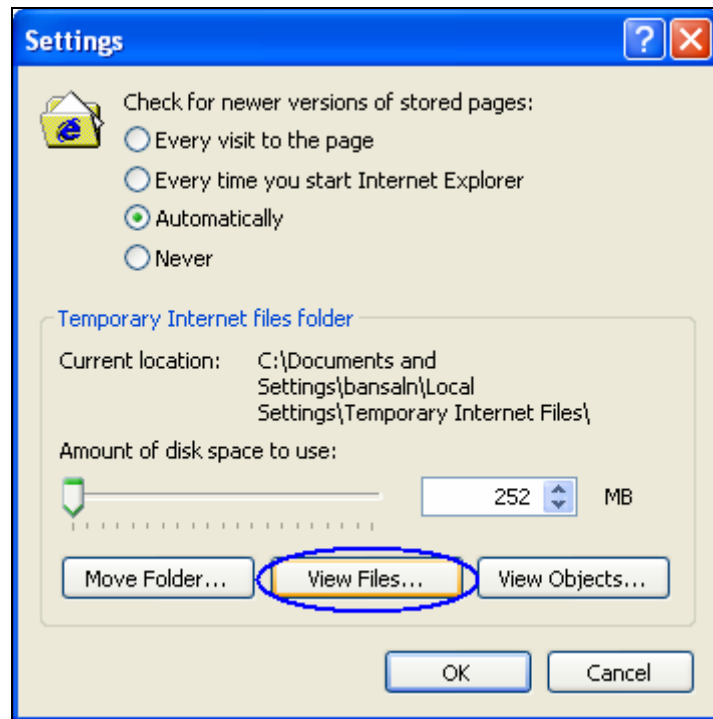


Figure 18 - Screenshot of "View Files" Button

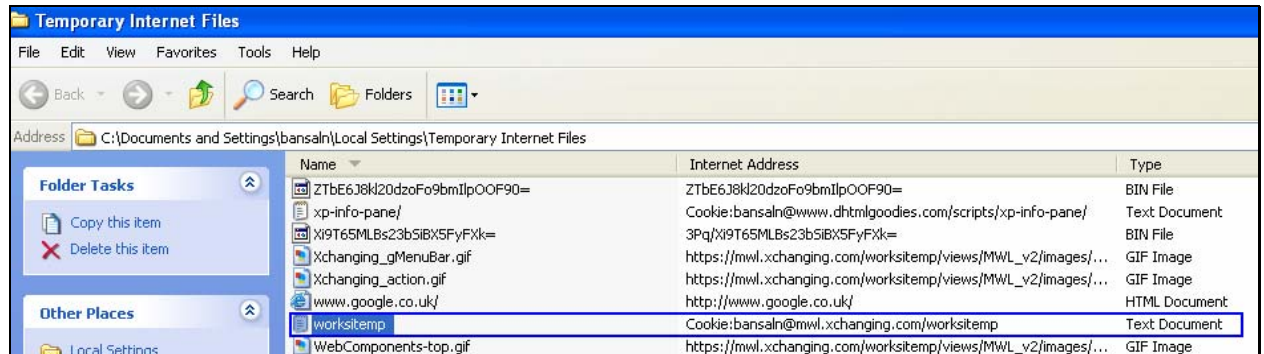


Figure 19 - Screenshot of worksitemp Temporary Files

4. Please select all files by name worksitemp and delete them.

5. Close the window showing Temporary Internet Files. Also, please close all the Internet Explorer Settings windows by clicking the 'Ok' button.

To set the new preferences, please follow the steps in the next section.

Getting Started Guide

This section describes the actions that users can take when they use the IMR Application for the first time. The three subsections describe the difference in experience depending on whether Sun JVM or Microsoft JVM is available or if neither JVM is available.

Checking the browser for this information is simple and is described in the [View the current browser configuration](#) section.

When Using Sun JVM versions 1.4.2_13 and 1.5.0_11

Navigate to IMR URL: <https://repository.xchanging.com/worksitemp/index.jsp>

Please enter the account ID, username and password and click on the “Login” button (see figure 20).

A screenshot of the 'Repository Login' page. At the top center is the Xchanging logo. Below it is a rounded rectangular form with a light gray background and a subtle drop shadow. The form is titled 'Repository Login' in bold blue text. It contains three input fields: 'Account ID', 'Username', and 'Password', each with a blue label and a white text box. Below the fields is a 'Login' button with a blue arrow pointing right. At the bottom of the form, it displays 'Version 4.1.1.7.20' and a checked checkbox labeled 'Validate Browser'.

Figure 20 - Screenshot of IMR Login

If the account ID, user name and password are correct, the following page should be displayed (see figure 21).

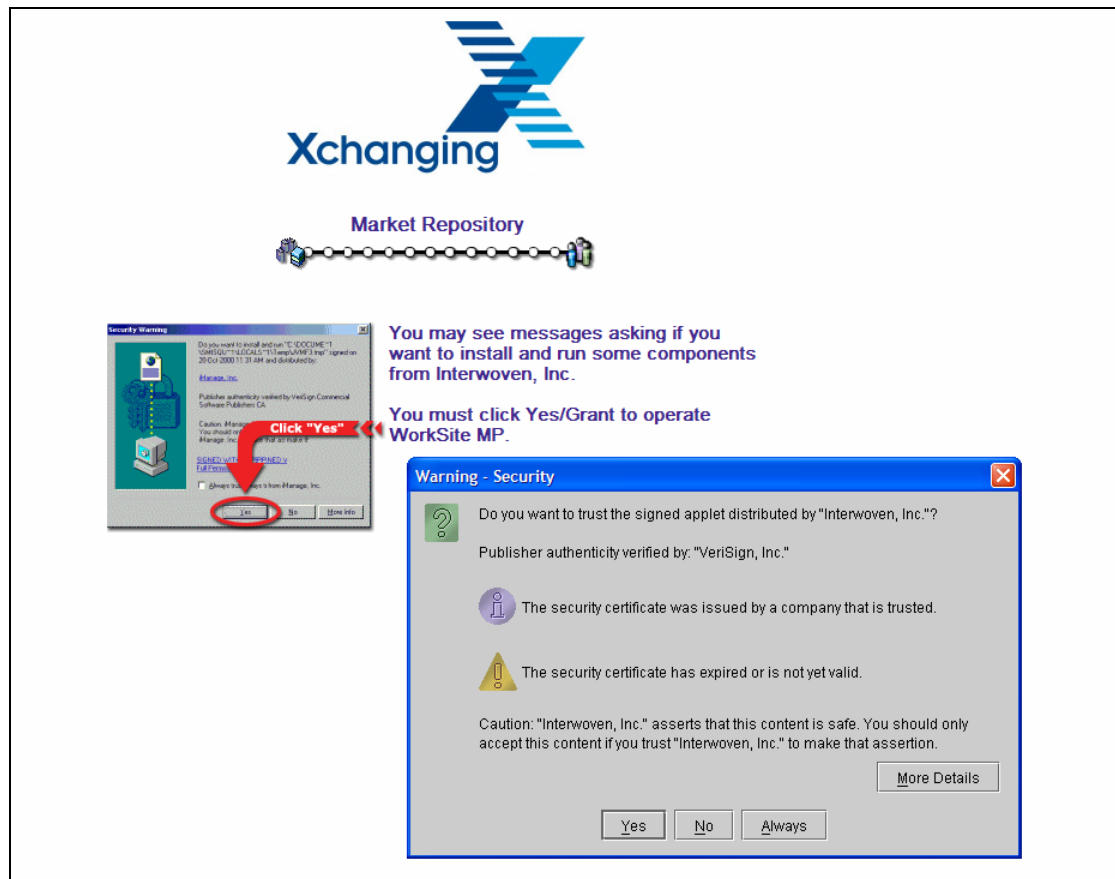


Figure 21 – IMR Screenshot of Signed Applet Popup

As can be seen in the screen capture above (see figure 37), the user is prompted if he/she would like to download the signed applet distributed by Interwoven, Inc.

In order to use all of the features offered by the IMR you will need to click the “Yes” button. This is required to run applets in the web browser. The details are available in the [Role of applets](#) section.

The users should confirm the use of the applet with their “in house” IT/Technical support.

For signing certificate details, please see [Annexure 2](#).

If the users wish to run the applets and do not want to be asked again, they should click the “Always” button to download the security certificate relating to the applet.

Should the users not wish to download the applet, they should click the “No” button. *It is important to note that IMR Application can still be used if the users select the “No” option.* Selecting “No” results in applets not being available. The features of IMR that are not available without applets are described in the [‘Impact of not using Applets’](#) section.

If “No” option is selected, a warning message is displayed (see figure 22).

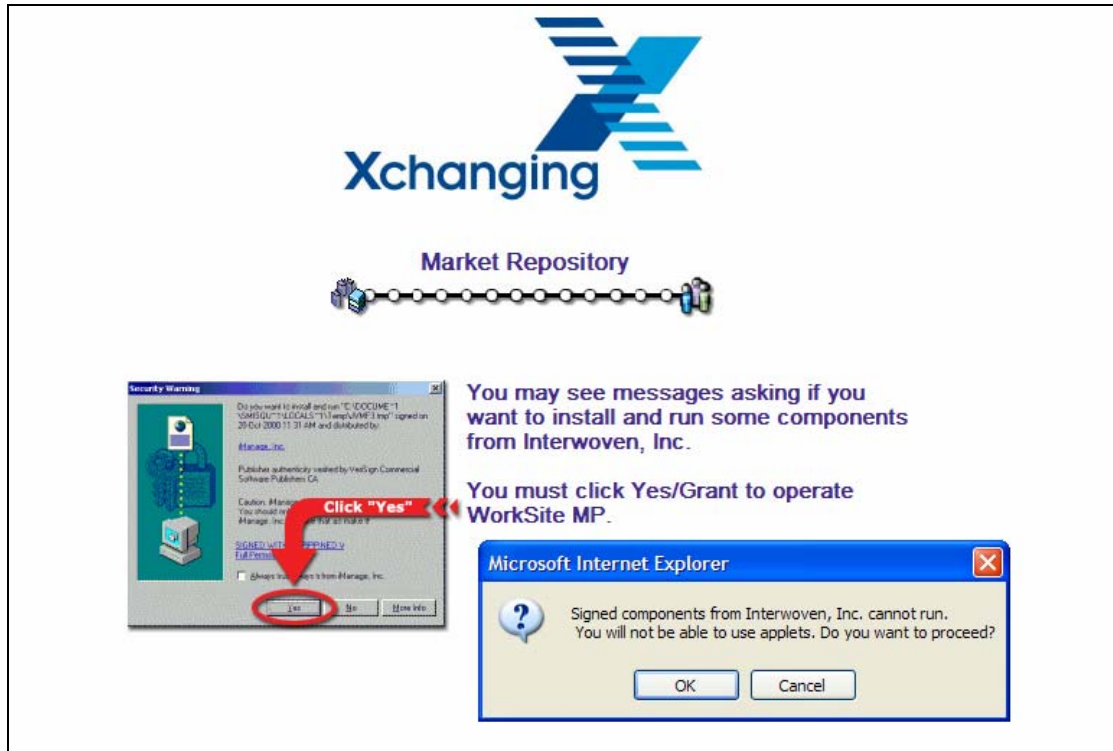


Figure 22 – IMR Screenshot of Warning Message if Applets Not Enabled

The users should select the OK button, upon which they are directed to the IMR home page.

When using Microsoft JVM

Navigate to IMR URL: <https://repository.xchanging.com/worksitemp/index.jsp>

Please enter the account ID, username and password and click on the “Login” button (see figure 23).

A screenshot of the Xchanging Repository Login interface. At the top center is the Xchanging logo. Below it is a rounded rectangular form titled 'Repository Login'. The form contains three input fields: 'Account ID', 'Username', and 'Password'. Below these fields is a 'Login' button with a right-pointing arrow. At the bottom of the form, it displays 'Version 4.1.1.7.20' and a checked checkbox labeled 'Validate Browser'.

Figure 23 - Screenshot of IMR Login

If the user name and password are correct, the users should see a screen similar to the one below (see figure 24).

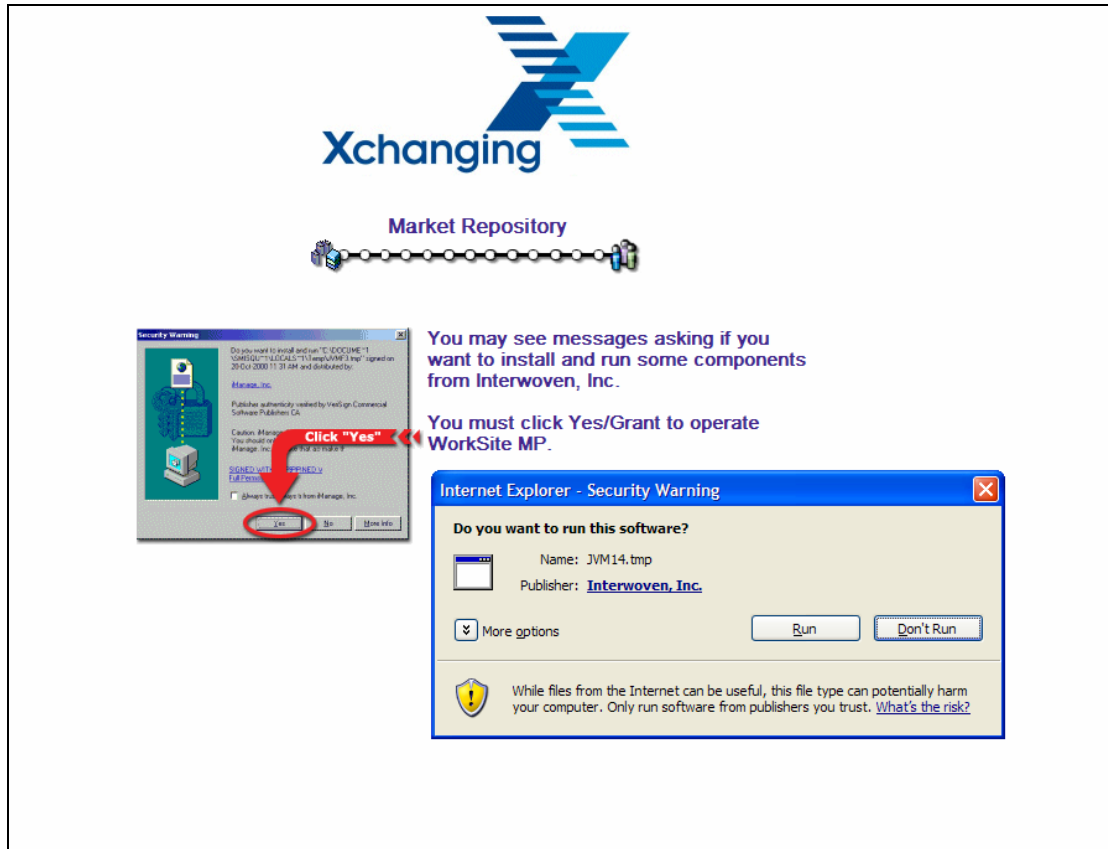


Figure 24 – IMR Screenshot of Interwoven Applet Software Popup

As can be seen in the screen capture above (figure 40), the user is prompted if he/she would like to download the signed applet distributed by Interwoven, Inc.

In order to use all of the features offered by the IMR the users will need to click the “Yes” button. This is required to run applets in the web browser. The details are available in the [Role of applets](#) section.

The users should confirm the use of the applet with their “in house” IT/Technical support.

For signing certificate details, please see [Annexure 2](#).

Please note that to choose the “Run” option, an internet connection to site other than <https://mwl.xchanging.com> is not required.

If the users wish to run the applets and do not want to be asked again, they can click on “More options” and select “Always run software from Interwoven, Inc.” and press “Run” button. This is shown in the screen captures below (see figures 25 and 26).



Figure 25 - Screenshot of More Options button



Figure 26 - Screenshot of Options

Should the users not wish to download the applet, they should click the “Don’t Run” button. *It is important to note that IMR Application can be used if the users select the “No” option.* Selecting “No” results in applets not being available. The impact of not having applets is described in the [‘Impact of not using Applets’](#) section.

If “No” option is selected, a warning message is displayed (see figure 27). The users should select the OK button, upon which they are directed to the IMR home page.

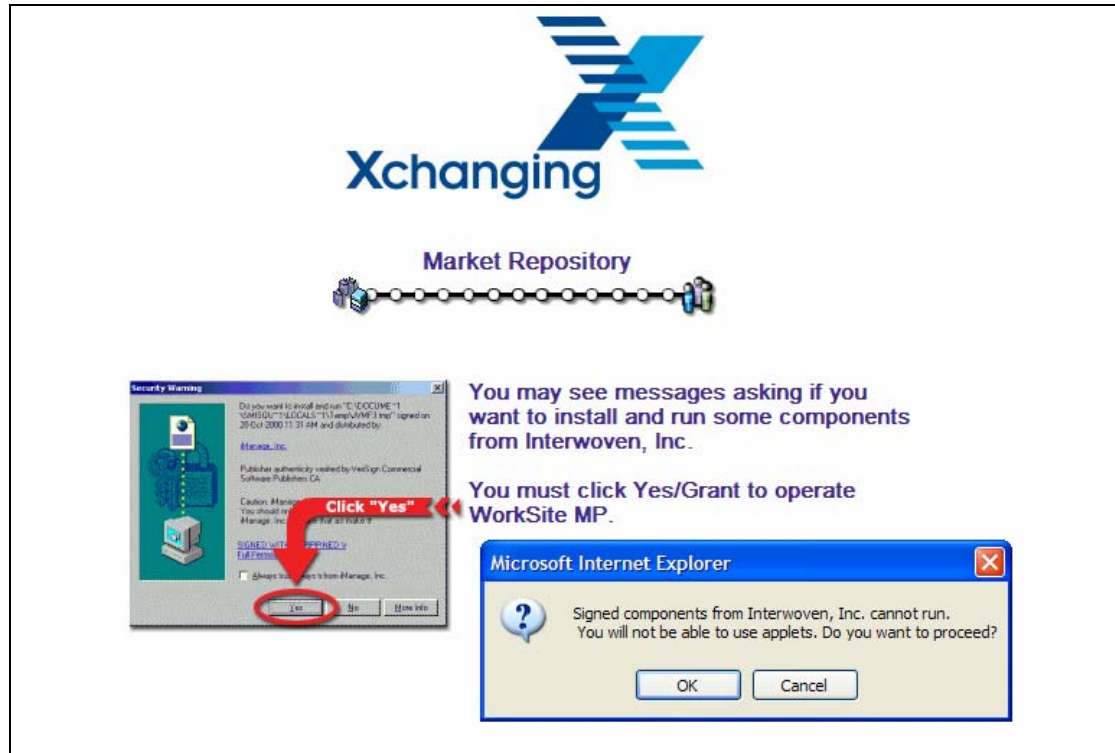


Figure 27 – IMR Screenshot of Warning Message if Applets Not Enabled

When No JVM installed or Applets are not available

Applets may not be available for use by IMR website because of the following reasons:

- A recommended version of Sun JRE or Microsoft JVM is not installed.
- Sun JRE is installed but at the time of security warning prompt, user has selected “No” option.
- Microsoft JVM is installed but at the time of security warning prompt, user has selected “Don’t run” option.

This section describes the actions users can take when the applets are not available.

The user navigates to IMR URL:

<https://repository.xchanging.com/worksitemp/index.jsp>

Enters the account ID, username and password and clicks on the “Login” button (see figure 28).



Figure 28 - Screenshot of IMR Login

A warning message should be displayed saying that applets are not available (see figure 29). The users should click on the OK button to use IMR.

It is important to note that IMR Application can be used without applets. The impact of not having applets is described in the ['Impact of not using Applets'](#) section.

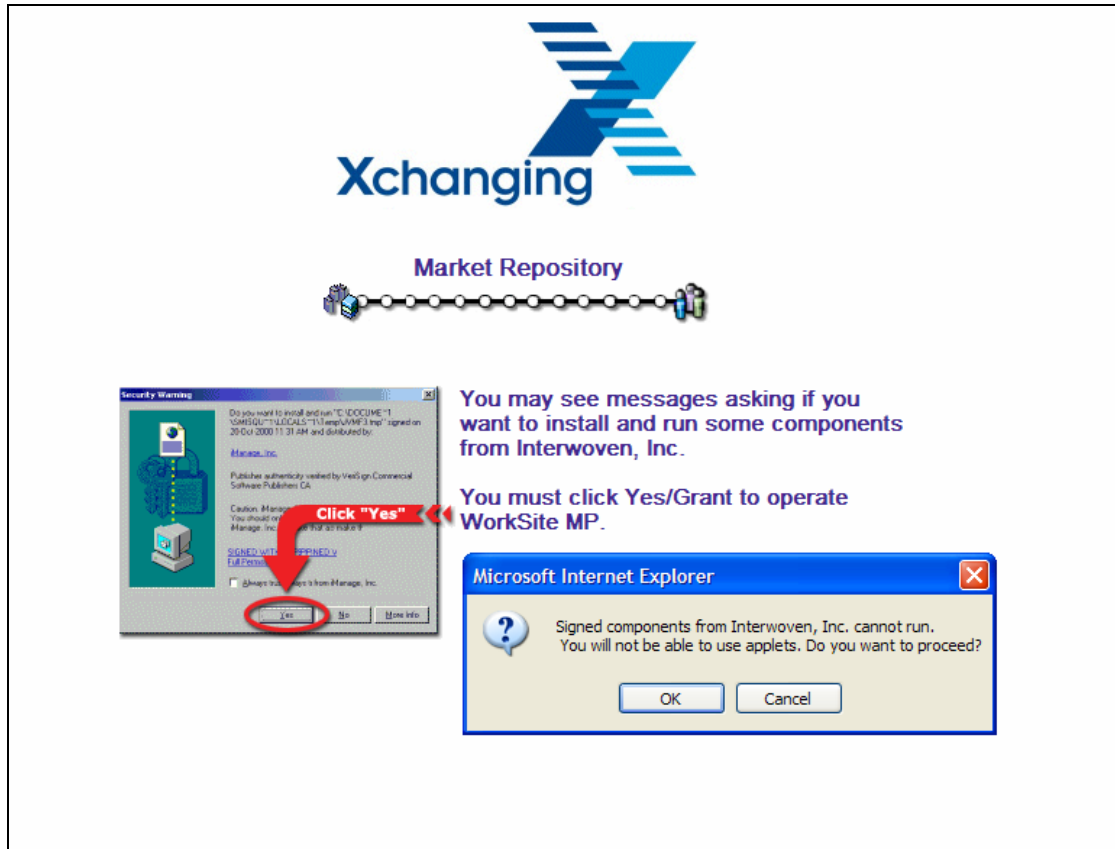


Figure 29 - IMR Screenshot of Warning Message if Applets Not Enabled

Frequently Asked Questions

Does IMR work with Sun JRE 1.3 / JVM 1.3?

IMR does not work with Sun JRE 1.3 / Sun JVM 1.3. It is recommended that users should upgrade to a recommended version of Sun JRE e.g. 1.4.2_13. More details are available in [requirements for JRE](#) section.

Does IMR work with Sun JRE 1.5 or Java 5?

Yes, IMR works with JRE version 1.5.0_11. However, since the support for Java 5 commenced in February 2007, it is possible that users with Java 1.5 in the browsers prior to this might not be able to use applets. This should be resolved by resetting the preferences for applets as described in the section '[Resetting Preferences for Applets](#)'

A special setting is required when JRE version 1.5.0_11 is used and MWL or IMR is accessed using proxy server. This setting is described in [Annexure 3](#).

Does IMR work with Internet Explorer 7?

No problems have been found with IMR running on Internet Explorer 7. However, Internet Explorer 7 is not supported by IMR and it is recommended that Internet Explorer 6 with Service Pack 2 is used.

How do I check which JVM version do I have OR if I have applets enabled or not?

This can be checked by visiting the following URL in your browser.

<https://mw1.xchanging.com/worksitem/bc/browserinformation.jsp>

More details are available in the [View the current browser configuration](#) section.

What is an applet?

An applet is a program written in the Java programming language that can be included in an HTML page. For more details Please refer to the Glossary section.

What should I do when JRE 1.5 is installed in my machine but I want to use JRE 1.4.2_13?

Uninstall JRE 1.5 through windows control panel -> Add or Remove Programs, once it is completed install JRE 1.4.2_13 and restart the machine. To allow MWL or IMR to recognize JRE 1.4.2_13 in your browser, please follow the steps outlined in the section '[Resetting Preferences for Applets](#)'

From where can I download the Sun JRE version supported by IMR?

You can download the Sun JRE from Sun's web-site, following are the URLs

1. Sun JRE 1.4.2_13: <http://java.sun.com/j2se/1.4.2/download.html>
2. Sun JRE 1.5.0_11: http://java.sun.com/javase/downloads/index_jdk5.jsp

The above two are the latest version of Sun JRE, once the newer version of JRE is available you can download 1.4.2_13 and 1.5.0_11 versions from <http://java.sun.com/products/archive/> URL.

Support

Should you encounter any issues accessing the IMR or have any questions, please contact Service Desk using the following contact details:

Email: servicedesk@xchanging.com

Helpline: +44 (0) 870 380 0830

Annexure 1: Glossary of Terms

Applet: An applet is a program written in the Java programming language that can be included in an HTML page, much in the same way an image is included in a page. When you use a Java technology-enabled browser to view a page that contains an applet, the applet's code is transferred to your system and executed by the browser's Java Virtual Machine (JVM).

For more details, please refer <http://java.sun.com/applets/>

JRE: JRE stands for **J**ava **R**untime **E**nvironment: This is the package of software that must be installed on a machine in order to run Java applications.

JVM: JVM stands for **J**ava **V**irtual **M**achine. A JVM is a piece of software that is responsible for running Java programs

Cookie: HTTP cookies, sometimes known as web cookies or just cookies, are parcels of text sent by a server to a web browser and then sent back unchanged by the browser each time it accesses that server. HTTP cookies are used for authenticating, tracking, and maintaining specific information about users, such as site preferences.

Annexure 2

Sun JRE version 1.5.0_11 is used and IMR is accessed using proxy server

A special setting is required in the user's local machine if Sun JRE version 1.5.0_11 is used with proxy server to access <https://mwl.xchanging.com> or <https://repository.xchanging.com/worksitemp/index.jsp>.

Please perform the following steps to make the required change in the user's machine.

1. Open the file "java.policy" available in "C:\Program Files\Java\j2re1.5.0_11\lib\security" directory.
2. Add the following line at the end of the file.
 - grant {

 permission java.net.SocketPermission "**PROXY HOST:PROXY PORT**", "connect,accept,resolve";

 };
 - Please replace the highlighted text with the actual proxy server host address and port number and save it.
3. Close any existing browser sessions and access IMR in a new browser session.